

Basklarinet grepentabel

(ook toepasbaar voor altklarinet, contra-alt klarinet en contrabas klarinet)

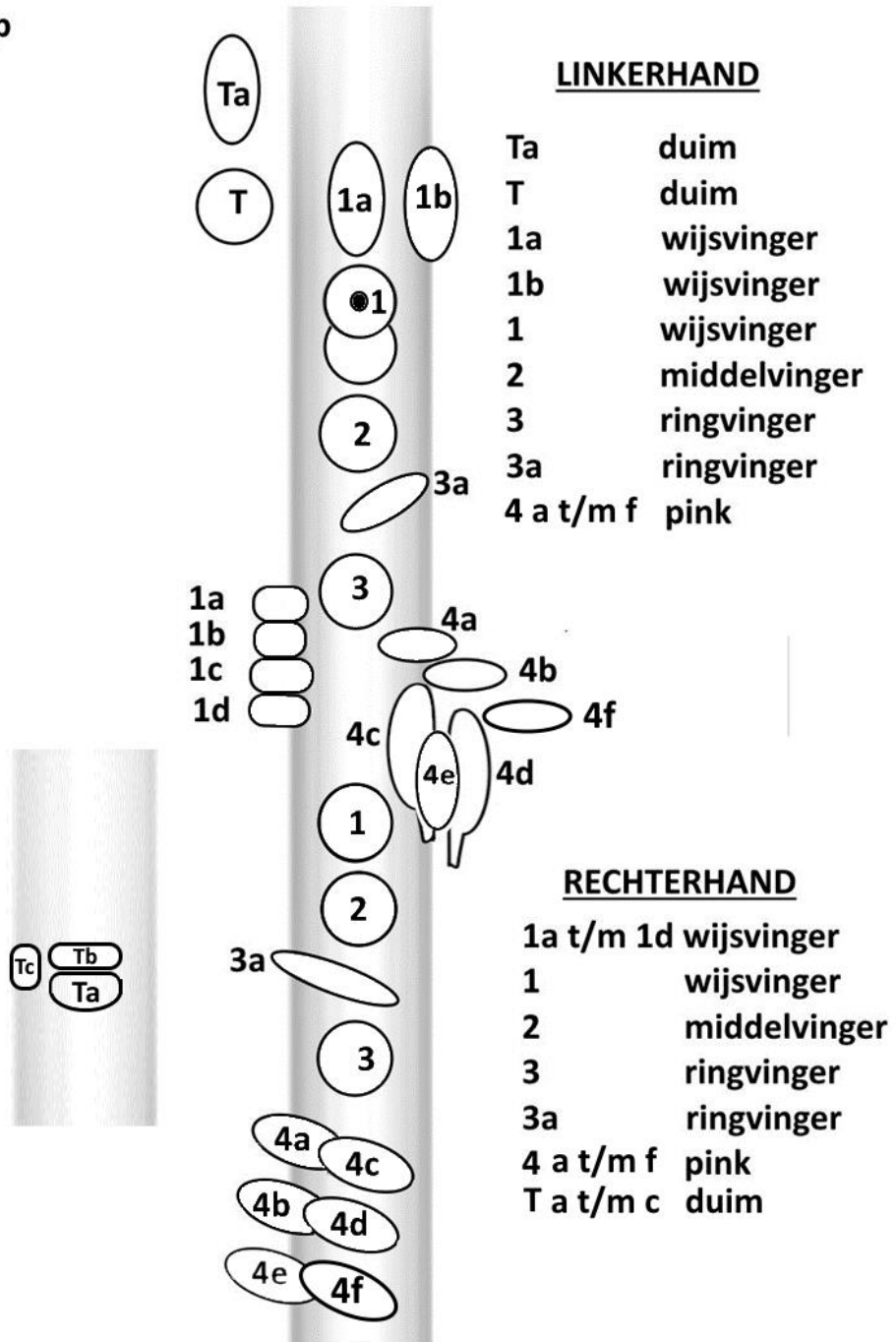
LINKS:

Ta - registerklep

- T G
- 1a A
- 1b Gis
- 1 E
- 2 D
- 3 C
- 3a D#
- 4a C#
- 4b Lage F
- 4c Lage E
- 4d Lage F#
- 4e (soms) G#
- 4f Lage D

RECHTS:

- 1a tril C
- 1b tril Bb
- 1c tril F#
- 1d tril Eb
- 1 Bb
- 2 A
- 3 G
- 4a Lage F#
- 4b Lage E
- 4c G#
- 4d Lage F
- 4e Lage Eb
- 4f Lage D
- Ta Lage C
- Tb Lage C#
- Tc Lage Eb



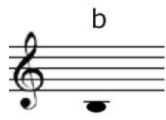
Voor lage C tot lage Es

C C# D of es of

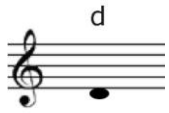
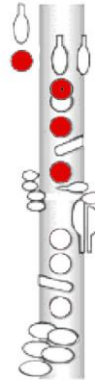
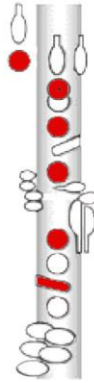
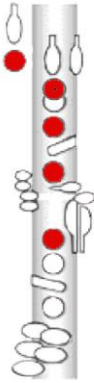
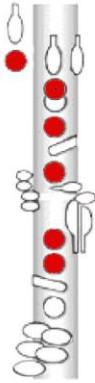
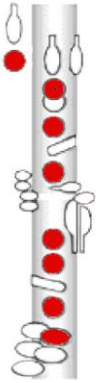
Diagram illustrating the fretboard positions and fingerings for the notes C, C#, D, and es (E-flat) in the lower register. Each note is shown with a treble clef staff and a corresponding fretboard diagram. The fretboard diagrams show the positions of the fingers (1-4) on the strings, with red dots indicating fretted notes and white circles indicating open strings. The 'of' notes are shown with a bass clef staff and a fretboard diagram with a green dot on the 1st fret of the 6th string.

e of f of fis ges of g

Diagram illustrating the fretboard positions and fingerings for the notes e, f, fis, ges, and g in the lower register. Each note is shown with a treble clef staff and a corresponding fretboard diagram. The fretboard diagrams show the positions of the fingers (1-4) on the strings, with red dots indicating fretted notes and white circles indicating open strings. The 'of' notes are shown with a bass clef staff and a fretboard diagram with a green dot on the 1st fret of the 6th string.



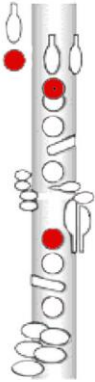
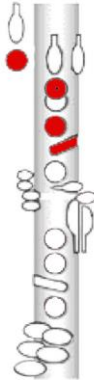
of



of

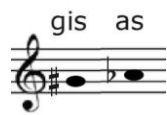
of

of

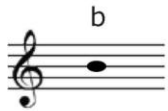
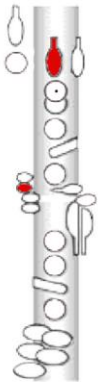
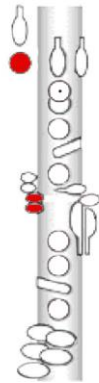




of



of



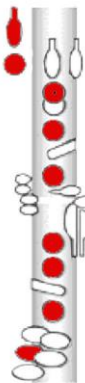
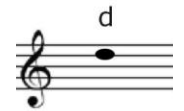
of



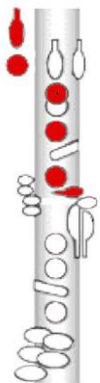
of

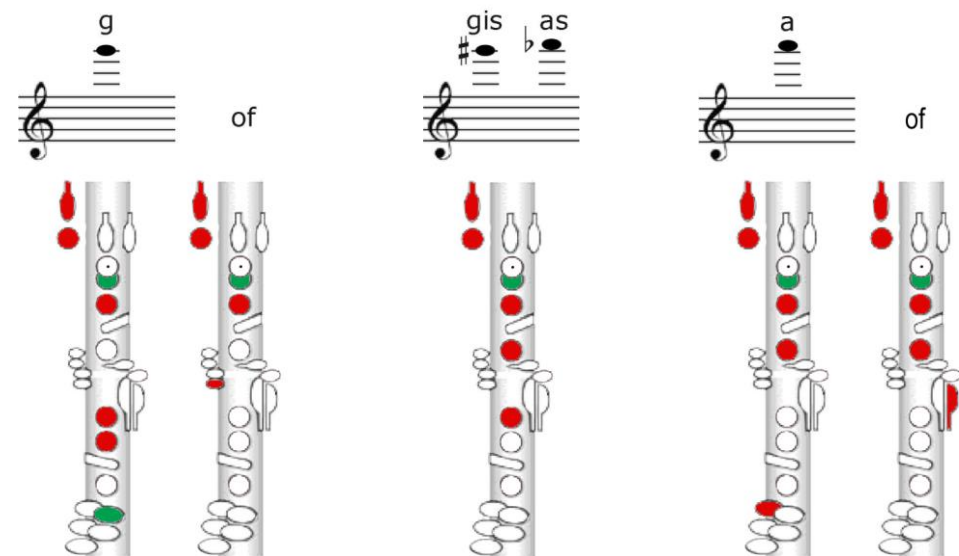
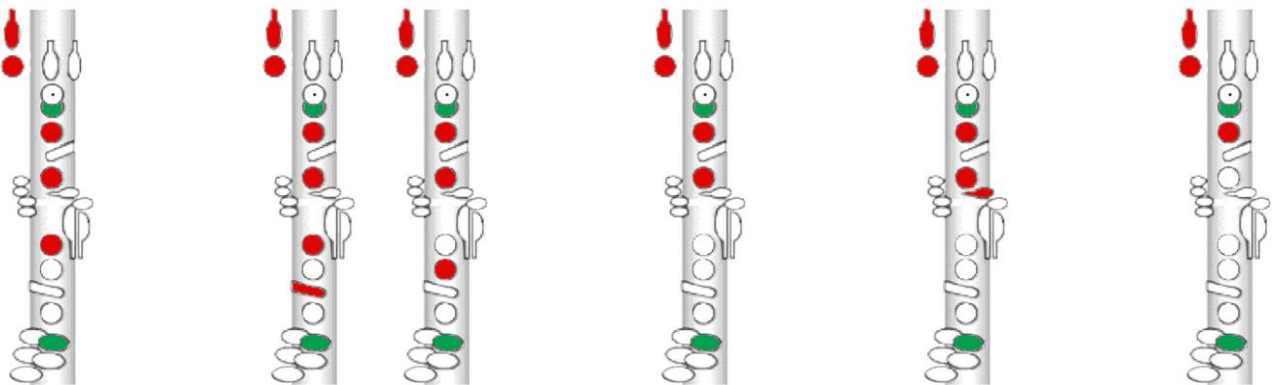
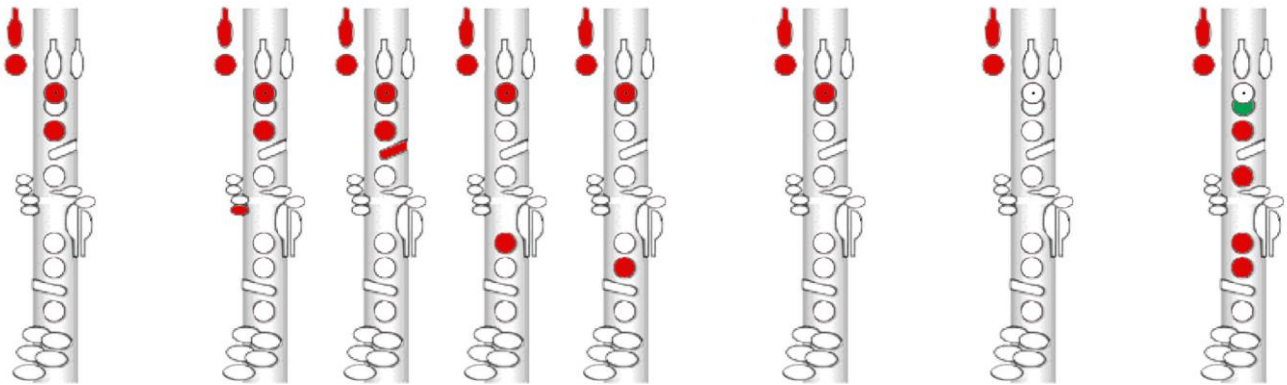
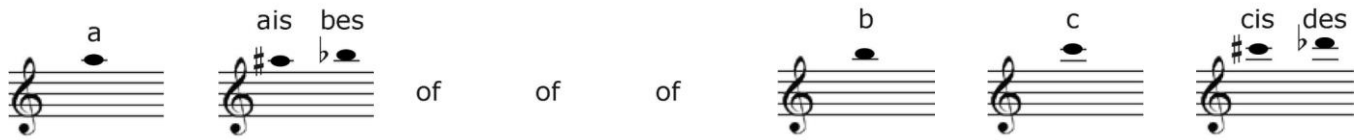


of



of





Over de groene
denkt niet
iedereen
hetzelfde.
Het kan per
instrument
verschillen.